

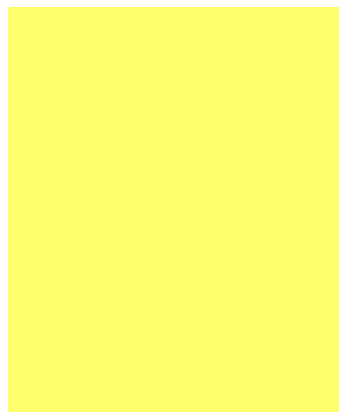
# Technical Data Sheet

## Pigment SunTone® Yellow 1

### Product Description:

C.I. Name	Pigment Yellow 1
C.I. No	11680
CAS NO	2512-29-0
EC No.	219-730-8
Chemical Class	MONO AZO
Hue	Bright Yellow (Opaque)

Mass Tone  
(5 % Pigment)



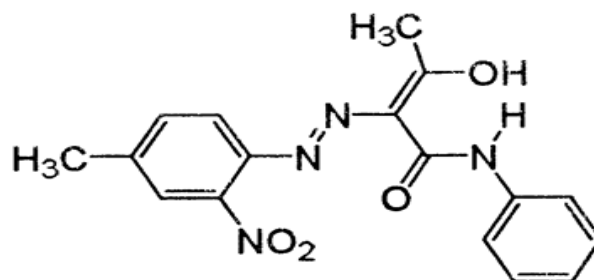
Reduction  
(1:10 TiO2)



### Physical Data :

pH	6 – 8
Density [ g/cm <sup>3</sup> ]	1.35-1.40
Oil Absorption(g/100g)	40 ± 5.0
Sieve Residue [325 mesh]	Max. 1%
Moisture Content	Max. 1%

### Chemical Structure:



### Fastness Properties:

Light Fastness (Mass Tone)	6
Light Fastness (Reduction)	5
Heat Resistance	160°
Acid (5% HCL)	4-5
Alkali (5% NaOH)	4-5
Ethyl Alcohol	4
Ethyl Acetate	4
MEK	3
Xylene	3
Mineral Spirit	5

### Application:

Water based Paint	Use
Universal Colourant	Use
Alkyd Based paint	Use
General Industrial paint	Use
Automotive Refinish	Can Use
Powder Coating	Can use
Coil Coating	Can Use

\*The colors above have been generated electronically and should therefore not be used for comparison purposes. The colors are meant to give a first impression of the colorant shade. The information contained herein is based on our state of knowledge. Our technical advice (whether verbal, in writing or by way of trials) is solely given to the product indicated and constitutes no guarantee of particular quality. It is the duty of the user to ensure that this information is appropriate and complete with respect to the specific use intended.